



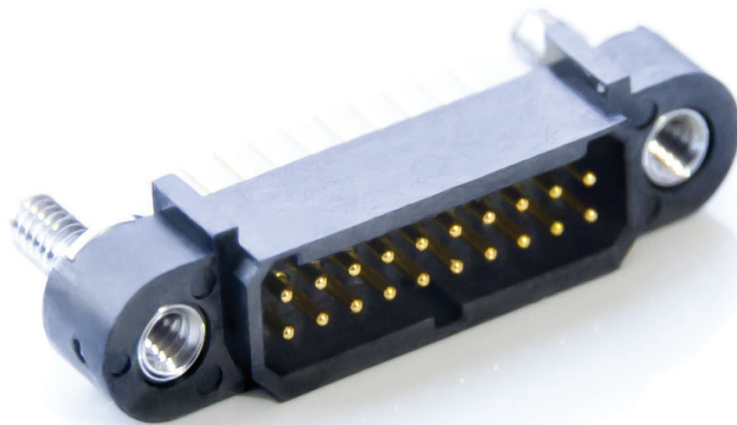
CREATIVE
INTERCONNECT
SOLUTIONS

AMM

1 MM PITCH

*IRRESISTIBLY
SMALL*

KEEP YOUR CONNECTION SIMPLE



EXPOSED
ENVIRONMENTS

1mm
pitch

AMM

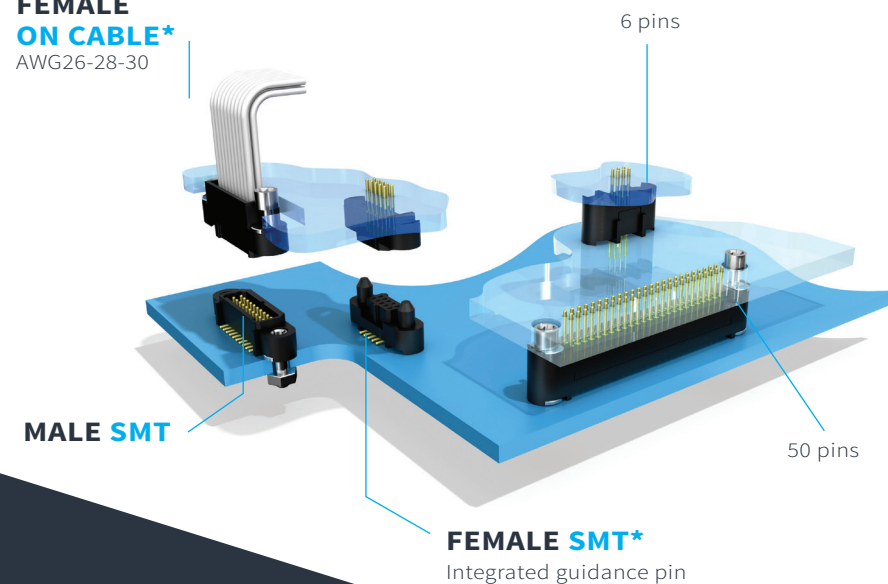
Main features & Product specifications

Do you need a solution to solve your most demanding space constraints issues? Check out the capabilities offered by our new, AMM, 1.00 mm pitch connector. The highly reliable AMM series offers **five standard layouts** that are stocked and **available in just a few days**: 06, 10, 20, 34, or 50 contacts distributed over 2 rows.

Lightweight and secure with ingenious features like the integrated guidance pin for stacking purposes, the AMM range keeps your interconnect solution simple and efficient.

- **MOQ: 1**
- **Tape&Reel packaging**
- **2D and 3D available on the website**
- **Easy custom on request**

FEMALE ON CABLE*
AWG26-28-30



***EASY CUSTOM**
ANY OTHER PIN NUMBER
CABLE VERSIONS
FEMALE SMT
CONNECTORS W/O MOUNTING EARS
available on request

MATERIAL

- HOUSING: LCP
- MALE CONTACTS: COPPER ALLOY, AU 0.15 TO 0.4 μ MAX
- FEMALE CONTACTS: SLOTTED CONTACT WITH 4 CONTACT POINTS, COPPER ZINC ALLOY, AU 0.15 TO 0.4 μ MAX
- HARDWARE: STAINLESS STEEL 316L

AMM

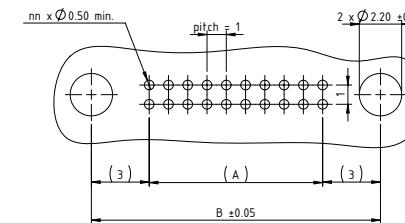
Part numbering & Overall dimensions

→ PART NUMBERING

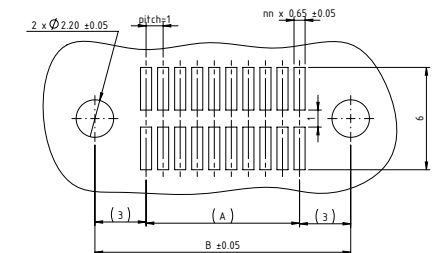
Pre cabled connectors, female SMT versions available on request.

Series	Gender	LF contact type	LF contact nbr	Fixing	Visual	Mating part (fixing)
A22	1 Male	Y Straighth Thru hole	06-10-20-34-50	V22 Straight jackscrew		V16
				V16 Captive screw		V22
				VXX No fixing		R
	2 Female	Y Straighth Thru hole	06-10-20-34-50	V22 Straight jackscrew		V16
				V22 Straight jackscrew		V16
				V16 Captive screw		V22
				R Racking		VXX
				VXX No fixing		

→ THRU HOLE PCB LAYOUT



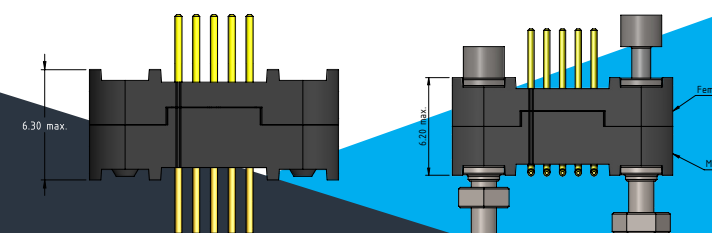
→ SMT PCB LAYOUT



→ OVERALL DIMENSIONS

Male and female straight on PCB

Male SMT and female straight on PCB



Dimension table					
LF contact number	6	10	20	34	50
A=Distance between pins (mm)	2.00	4.00	9.00	16.00	24.00
B=Distance between fixings (mm)	8.00	10.00	15.00	22.00	30.00

→ SPECIFICATIONS

06-10-20-34-50

GLASS FIBER COMPOSITE

MECHANICAL OPERATIONS UP TO 1000 CYCLES

UP TO 4.8A@25°C (PCB to cable 20 pins)
UP TO 2.5A@25°C (PCB to PCB 20 pins)

VIBRATION SEVERITY 15G SCHOCK 100G

TEMPERATURE CYCLING -65°C +200°C

CONTACT RESISTANCE <10mΩ

WITHSTANDING VOLTAGE @SEA LEVEL 600 V RMS

→ TARGET MARKETS

DEFENSE & SECURITY

CIVIL AVIONICS

HARSH INDUSTRIAL

CREATIVE INTERCONNECT SOLUTIONS

With over 40 years of experience, Nicomatic combines a proven track record and continuous innovation.

We provide solutions for defense, security, energy, space, civil avionics, and many other applications, respecting our core values based on service, quality and close relationship with our customers.

HUMAN FACTOR

is the key to success.

*We promote initiative and responsibility,
We encourage creativity & reactivity,
To better meet your needs and anticipate your requirements.*

Ready to join our team ?

recruitment@nicomatic.com

HEADQUARTER

FRANCE
T: +33 (0)4 50 36 13 85
france@nicomatic.com

MEMBER OF
Gifas - Eden
Aerospace cluster

SUBSIDIARIES

UNITED STATES
T: +1 215 444 9580
usa@nicomatic.com

CHINA
T: +86 (0)22-23858836
china@nicomatic.com

INDIA
T: +91 80 4213 1574
india@nicomatic.com

UNITED KINGDOM
T: +44 (0)11 83 801033
uk@nicomatic.com

GERMANY
T: +49 (0)33203 878800
germany@nicomatic.com

TURKEY
T: +90 (0) 312 504 37 29
turkey@nicomatic.com

SOUTH KOREA
T: +82 (0)2 553 6822
korea@nicomatic.com

JAPAN
T: +81 (0)80 2138 0909
japan@nicomatic.com

SINGAPORE
T: +65 6262 1280
singapore@nicomatic.com

TAIWAN
T: +886 (0)2 2311 2667
mailto:taiwan@nicomatic.com

CANADA
T: +41 (0) 438 885 3395
canada@nicomatic.com



WEBSITE
nicomatic.com